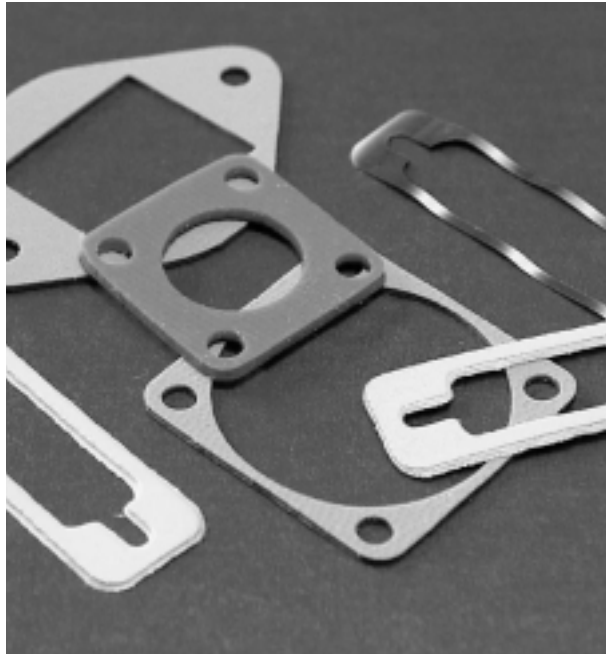
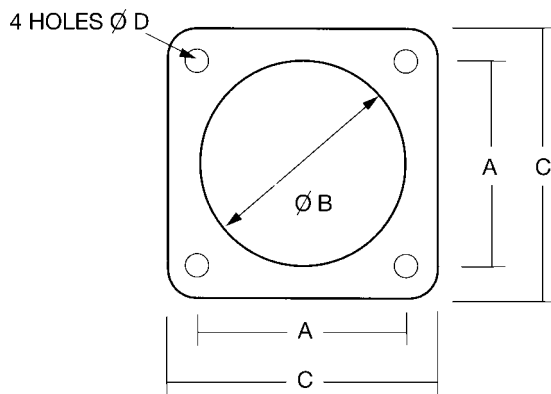
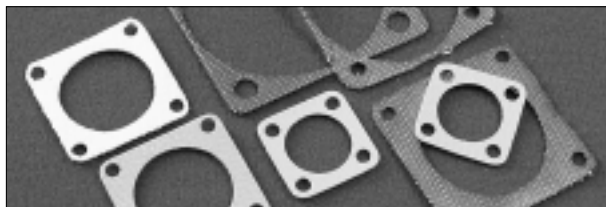


900 Series Connector Gaskets



For use with connectors where an EMI/RFI seal is required. The gaskets can be manufactured in a variety of materials to suit most environmental and interface conditions. The gaskets are made from our standard range of tools and are designed to comply with standard connectors. If those listed below do not meet with your exact requirements, we would be pleased to manufacture gaskets to your own design.

MIL Connector Gaskets



DIMENSIONS ARE IN MILLIMETRES

91 MIL Connector Gaskets

MIL-C-81511				
Shell Size	dim. A	dia. B	dim. C	dia. D
8	15.09	14.43	20.62	3.5
10	18.26	17.27	23.80	3.5
14	23.01	23.83	28.58	3.5
16	24.61	27.00	31.75	3.5
18	26.97	30.20	34.11	3.5
20	29.36	33.32	37.26	3.5
22	31.75	36.50	39.67	3.5
24	34.93	39.70	43.26	4.0

92 MIL Connector Gaskets

MIL-C-5015				
Shell Size	dim. A	dia. B	dim. C	dia. D
8	15.09	12.70	22.23	4.5
10	18.26	15.88	25.40	4.5
12	20.65	19.05	27.79	4.5
14	23.01	22.23	30.18	4.5
16	24.61	25.40	32.54	4.5
18	26.97	28.58	34.93	5.0
20	29.36	31.75	38.10	5.0
22	31.75	34.93	41.28	5.0
24	34.93	38.10	44.45	5.5
28	39.67	44.45	50.80	5.5
32	44.45	50.80	57.15	6.0
36	49.23	55.58	63.50	6.0
40	55.58	61.93	69.85	6.0
44	60.33	70.64	76.20	6.0
48	66.68	76.99	82.55	6.0

93 MIL Connector Gaskets

MIL-C-38999				
Shell Size	dim. A	dia. B	dim. C	dia. D
9	15.09	16.25	21.34	4.0
9/10	18.26	19.30	24.51	4.0
11/12	20.62	22.48	26.92	4.0
13/14	23.01	25.78	29.29	4.0
15/16	24.61	29.05	31.95	4.0
18	26.97	32.25	34.32	4.0
19/20	29.36	35.18	38.10	4.0
21/22	31.75	38.35	41.28	4.0
23/24	34.93	41.53	44.45	4.5
25	38.10	44.70	47.63	4.5

How to order: Choose material from sheet stock, 400, 500 and 1200 (SNG, SSA, SSC) Series.

Material	Thickness	Material Code
410	0.8	1
420	0.8	2
410	1.6	3
420	1.6	4
525	0.5	5
535	0.8	6
515	0.5	7
545	0.8	8
1200 SNG	1.6	9
1200 SSA	1.6	10
1200 SSC	1.6	11

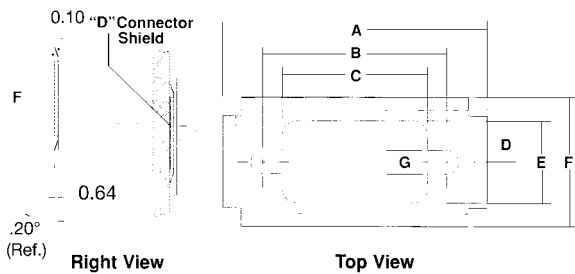
Example: $\frac{93}{\text{Table No.}}$ $\frac{3}{\text{Material Code}}$ / $\frac{18}{\text{Shell Size}}$

D Connector Gaskets



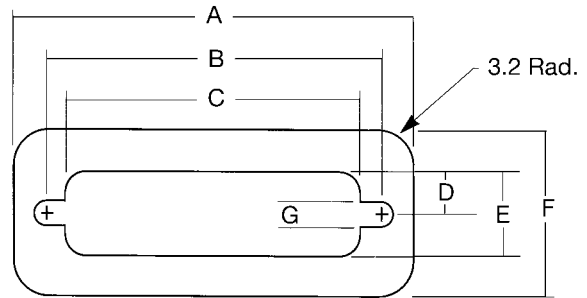
D type connector gaskets are available in two formats, pressed beryllium copper or stainless steel and material from sheet stock, 400, 500 and 1200 (SNG, SSA, SSC) Series.

94 Metallic D Type Range



No Pins	A	B	C	D	E	F	G	Material & Part No.	
								BeCu	SS
9	35.8	24.9	19.8	5.6	11.2	17.5	3.2	94-768	94-778
15	44.2	33.3	28.2	5.6	11.2	17.5	3.2	94-769	94-779
25	57.9	47.0	41.9	5.6	11.2	17.5	3.2	94-770	94-780
37	74.4	63.5	58.2	5.6	11.2	17.5	3.2	94-771	94-781
50	72.1	61.2	53.6	7.1	13.9	20.3	6.1	94-772	94-782

95 Elastomer D Type Range



No Pins	A	B	C	D	E	F	G
9	35.8	24.9	19.8	5.6	11.2	17.5	3.2
15	44.2	33.3	28.2	5.6	11.2	17.5	3.2
25	57.9	47.0	41.9	5.6	11.2	17.5	3.2
37	74.4	63.5	58.2	5.6	11.2	17.5	3.2
50	72.1	61.2	53.6	7.1	13.9	20.3	6.1

How to order: Choose material from sheet stock, 400, 500 and 1200 (SNG, SSA, SSC) Series.

Material	Thickness	Material Code
410	0.8	1
420	0.8	2
410	1.6	3
420	1.6	4
525	0.5	5
535	0.8	6
515	0.5	7
545	0.8	8
1200 SNG	1.6	9
1200 SSA	1.6	10
1200 SSC	1.6	11

Example 95-3-9, 9 pin D type in 1.6 thick 410 material